

SMOOTH TRANSITION TO ADJACENT DRIVEWAY  
 "DO NOT ENTER" SIGN  
 MUTED R5-1 AND "EMERGENCY USE ONLY" SIGN MOUNTED ON POLE EX. ASPHALT DRIVEWAY

**LIMITS OF CONSTRUCTION IS PROPERTY LINE**

MEDIUM DUTY ASPHALT PAVEMENT PER DETAIL (TYP.)  
 PRESCRIPTIVE EASEMENT

6' WIDE LANDSCAPE STRIP

(2) 6' WIDE SWING GATES

6' TALL DUMPSTER ENCLOSURE, SEE ARCHITECTURAL PLANS FOR DETAILS

DUMPSTER PAD #4

10' x 12' CONCRETE PAD, 6" THICK 3,000 P.S.I. W/ONE LAYER W.W.F. 2.9x2.9, 6x6

EXISTING RETAINING WALL TO REMAIN

EXISTING ACCESS TO REMAIN

MEDIUM DUTY ASPHALT PAVEMENT PER DETAIL (TYP.)

35' UNDISTURBED ZONING BUFFER (TYP.)

24" CURB & GUTTER PER DETAIL (TYP.)

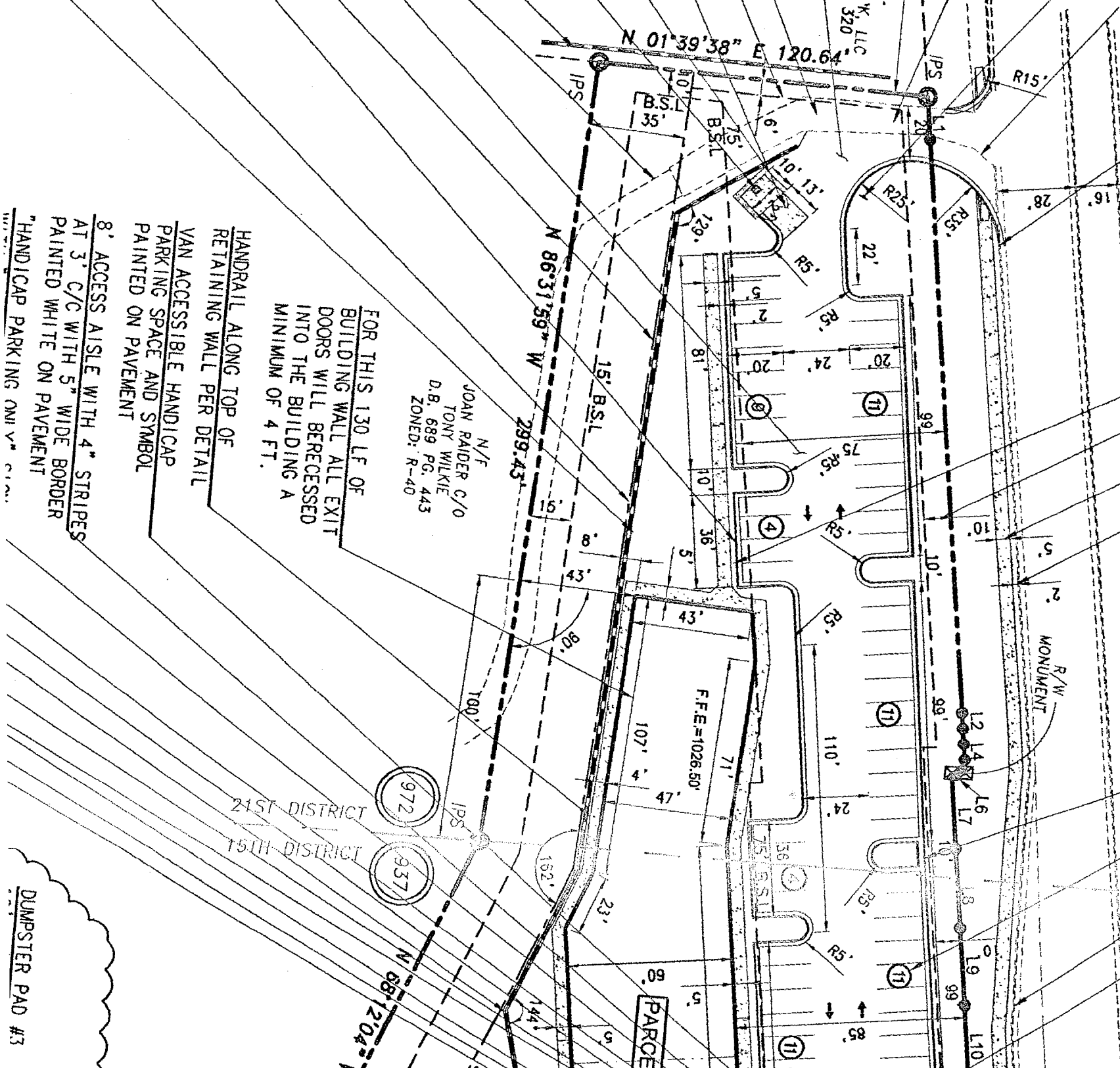
**LIMITS OF CONSTRUCTION IS 35' UNDISTURBED BUFFER**

PROPOSED MODULAR BLOCK TRAINING WALL, DESIGN BY OTHERS

HANDRAIL ALONG TOP OF RETAINING WALL PER DETAIL  
 VAN ACCESSIBLE HANDICAP PARKING SPACE AND SYMBOL PAINTED ON PAVEMENT  
 8' ACCESS AISLE WITH 4" STRIPES AT 3" C/C WITH 5" WIDE BORDER PAINTED WHITE ON PAVEMENT  
 \*HANDICAP PARKING ON 15TH DISTRICT

FOR THIS 130 LF OF BUILDING WALL ALL EXIT DOORS WILL BE RECESSED INTO THE BUILDING A MINIMUM OF 4 FT.

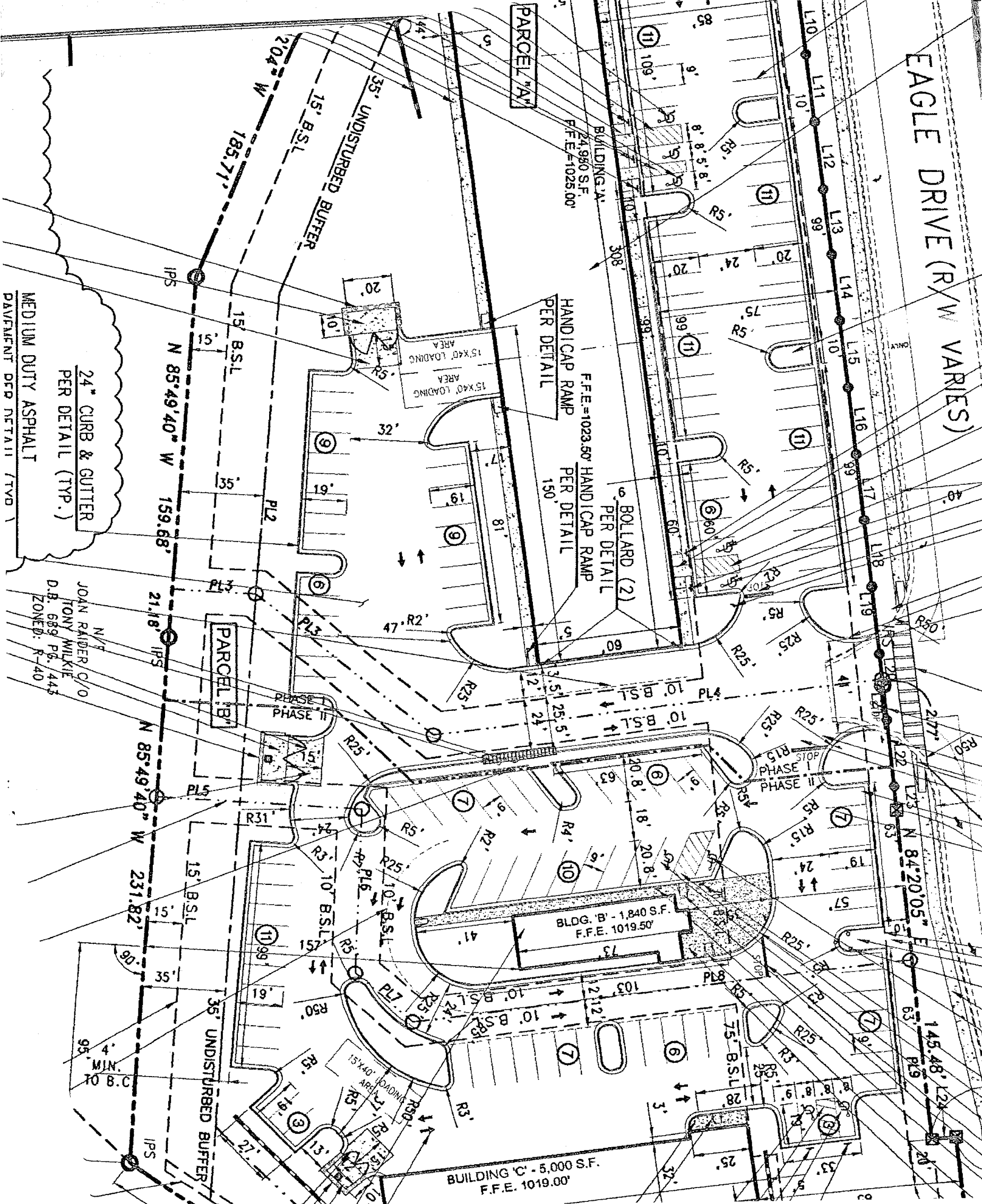
N/F  
 JOAN RAIDER C/O  
 TONY WILKIE  
 D.B. 689 PG. 443  
 ZONED: R-40



21ST DISTRICT  
 15TH DISTRICT

DUMPSTER PAD #3

EAGLE DRIVE (R/W VARIES)



PARCEL 'A'

BUILDING 'A'  
24,980 S.F.  
F.F.E.=1025.00'

HANDICAP RAMP  
PER DETAIL  
150'

BOLLARD (2)  
PER DETAIL

BLDG. 'B' - 1,840 S.F.  
F.F.E. 1019.50'

BUILDING 'C' - 5,000 S.F.  
F.F.E. 1019.00'

35' UNDISTURBED BUFFER  
15' B.S.L.  
204' W  
185.71'

24" CURB & GUTTER  
PER DETAIL (TYP.)  
MEDIUM DUTY ASPHALT  
PAVEMENT DGR DETAIL (TYP.)

JOAN RAIDER C/O  
TONY MILKIE  
D.B. 689 PG. 443  
ZONED: R-40

PARCEL 'B'

35' UNDISTURBED BUFFER  
15' B.S.L.  
N 85°49'40" W 231.82'

MIN. 10' B.C.

STOP  
PHASE I  
PHASE II

N 84°20'05" E  
145.48' L24  
63' PL9

20'